



Tweeting Jonson's 'Foot Voyage':
deeply mapping data

Anna Groundwater

School of History, Classics & Archaeology

@agroundw

anna.groundwater@ed.ac.uk

MS CR469, Cheshire Archives

My Gossie Johnson
his foot voyage
and myne vnto
Scotland.

Went out of London on Monday the eight of July
and roode that night to Totnam where I was
your lodg at Gales Boare &c. By the way they
saw not w^{ch} to Shal-walge, or want, and his two
Joes &c.

From thence to Waltham, where my Lady wrote came
to my Gossie on w^{ch} Mr D. Henry Mr Herbert
and Mr Powell, or, thence also came w^{ch} two
Cambridge men. One a fellow of a college called
Hones, and Blitheman Mr of Yale who are
thence to Dag-don, where a lunaticke roodman
met w^{ch} by the way and rood darning before w^{ch}
and a humorsall mother of whom w^{ch} would not be
with w^{ch}. Thence also to my mistresses thence to
faines by w^{ch} is asking whether w^{ch} would have
a merry song. W^{ch} is asked to be by a light and death
of my L^{dy} of the sea. This fellow now is to march
and raiged, w^{ch} is to be from forth my forward
till towards the shewing. Thence w^{ch} came to
w^{ch}, to Mr Grosse. Thence to Rob. Mansell
L^{dy}



Ben Jonson, c.1572-1637

Blyenberch, National Portrait Gallery

Data tweeted: www.twitter.com/BenJonsonsWalk

The image shows a screenshot of a Twitter profile page for Ben Jonson Walking (@BenJonsonsWalk). The profile is set to public and is followed by the user. The bio describes him as a playwright, poet, and courtier of controversy, known for his journey to Scotland in 1618. The page includes a navigation menu on the left, a 'Who to follow' section, and a list of tweets.

Navigation: Home, Notifications (50), Discover, Me, Search, Messages, Settings, Compose.

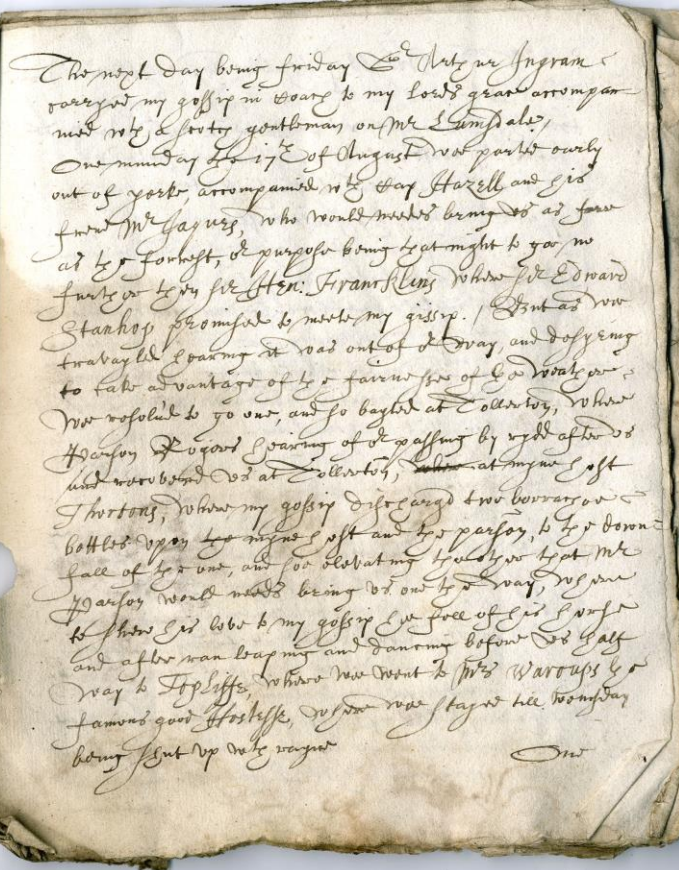
Profile Information:
Name: Ben Jonson Walking
Handle: @BenJonsonsWalk (FOLLOWS YOU)
Bio: Playwright, poet, courtier of controversy, a one-man carnival. In July 1618, he left London on foot for Scotland, a tale that was, until now, untold...
Location: Edinburgh and Nottingham · blogs.hss.ed.ac.uk/ben-jonsons-wa...

Stats: TWEETS 778, FOLLOWING 394, FOLLOWERS 777

Who to follow:
Sheffield CEMS @SheffieldC... (Followed by Dr Katie Steven...)
John Gallagher @earlymode... (Followed by Ben Jonson W...)

Tweets:
Ben Jonson Walking @BenJonsonsWalk · Oct 6
Our Friend from the South - So what happened next? The writer of the 'Foot Voyage' clearly thought his journey, an... ow.ly/2AulOV
Expand Reply Retweet Favorite More

Ben Jonson Walking @BenJonsonsWalk · Oct 2
@pipwillcox @ChapBookPro Good to see that, thanks!
View conversation Reply Retweet Favorite More



Re-presenting data

'so baited at Tollerton, where Parson Rogers recovered us at mine host Thorton's; where my gossip discharged two borracho bottles...to the downfall of the one & so elevating the other'

- 'My gossip dischargd two borrachoe bottles upon mine host & the parson, to the downfall of one, and so elevating the other..' [#Tollerton](#) [locating data]
- A borracheo bottle is a large wine-skin, associated with both Spain and drunken excess... see Devil is an Ass: <http://bit.ly/1cAfOSY> [linking data]

Tollerton tweeted, linked to, geo-located



Ben Jonson Walking @BenJonsonsWalk · 17 Aug 2013

Ben's Progress: Place: #Tollerton Date(s): Monday 17 August Distance from last point (miles): 9.9 Notes:... bit.ly/BJWmap



Ben Jonson Walking @BenJonsonsWalk · 17 Aug 2013

A borracheo bottle is a large wine-skin, associated with both Spain and drunken excess... see Devil is an Ass: bit.ly/1cAfOSY



Ben Jonson Walking @BenJonsonsWalk · 17 Aug 2013

'My gossip dischargd two borrachoe bottles upon mine host & the parson, to the downfall of one, and so elevating the other...' #Tollerton



Ben Jonson Walking @BenJonsonsWalk · 17 Aug 2013

'Desiring to take advantage of the fair weather we resolved to go on from #York and so baited at #Tollerton' ow.ly/mxIWR




Storify tweets, archive data, sustain legacy:

www.storify.com/jamesloxley/ben-jonson-s-walk

Ben Jonson's Walk

As tweeted in the summer of 1618 (sorry, 2013)

by  jamesloxley @jamesloxley

2 months ago · 61 total views ▾

As seen on  blogs.hss.ed.ac.uk



Ben Jonson Walking

@BenJonsonsWalk

 Follow

Hello and thank you to all recent followers (or should we say fellow walkers)...

7:21 AM - 3 Jul 2013



Bloggging data: <http://bit.ly/BJWblog>



The University of Edinburgh

engage

BLOGS FROM THE COLLEGE OF HUMANITIES AND SOCIAL SCIENCE

BEN JONSON'S WALK

SCHOOL OF LITERATURES, LANGUAGES AND CULTURES

Search



BEN JONSON'S WALK

'Prospect of ye Town and Abby of Dunfermling'

- Home
- Meet the author
- Blog
- The Walk Tweeted
- Map of the route
- Researchers
- Resources

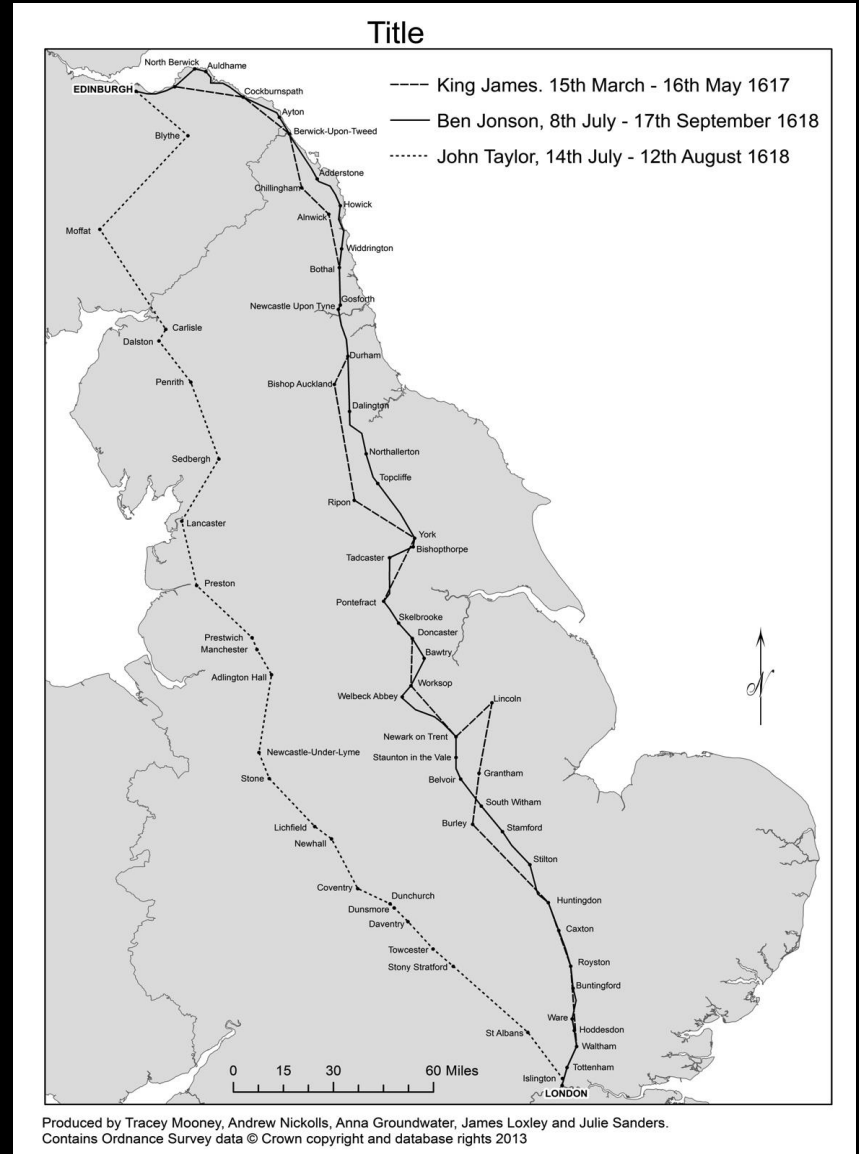


SUBSCRIBE


Get updates from Ben in your inbox.

Subscribe!

Mapping data

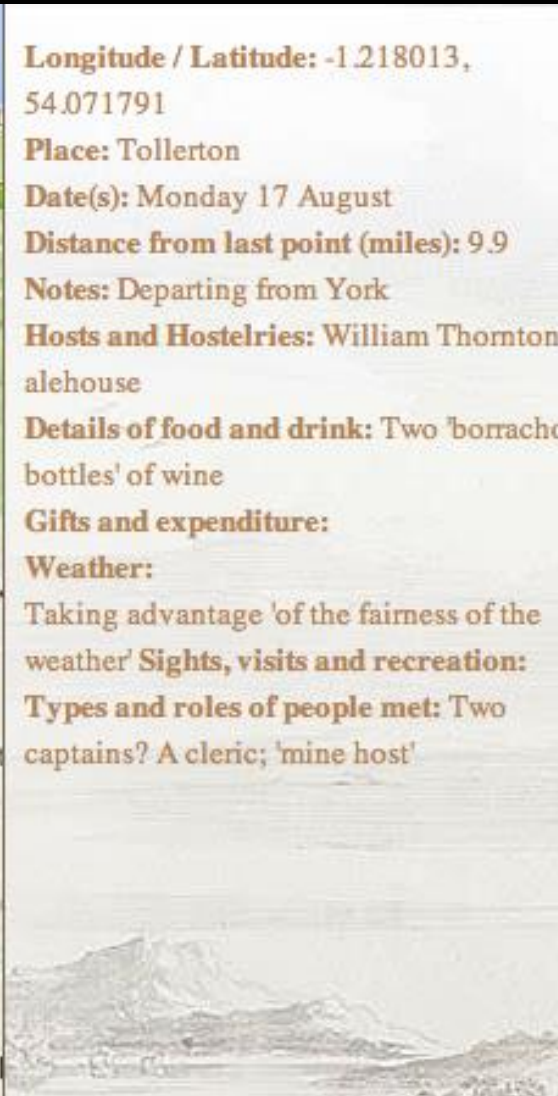


Adding depth: Jonson at Tollerton



The map displays a route through North Yorkshire, starting from York and heading south. Key locations marked include Darlington, Broomton, North Tollerton, Thirsk, Easingwold, Harrogate, and Wetherby. The North York Moors National Park is highlighted in green. Road numbers A1, A174, A17, A19, A170, A59, A58, A1(M), and A64 are visible. A series of brown shield-shaped icons with a white figure are placed along the route, with one specifically located at Tollerton. A zoom control is visible in the top left corner.

Longitude / Latitude: -1.218013, 54.071791
Place: Tollerton
Date(s): Monday 17 August
Distance from last point (miles): 9.9
Notes: Departing from York
Hosts and Hostelries: William Thornton - alehouse
Details of food and drink: Two 'borracho bottles' of wine
Gifts and expenditure:
Weather: Taking advantage 'of the fairness of the weather'
Sights, visits and recreation:
Types and roles of people met: Two captains? A cleric; 'mine host'



A landscape photograph showing a wide, open moorland area with rolling hills and a clear sky. The terrain is covered in low-lying vegetation, typical of a moor. In the distance, a range of hills or mountains is visible under a pale sky.

Deeper mapping: Palimpsest Project: LitLong mapping Edinburgh's texts



location visualiser

<http://litlong.edina.ac.uk/visualiser/location/>

keyword search

queen



search for 0 location

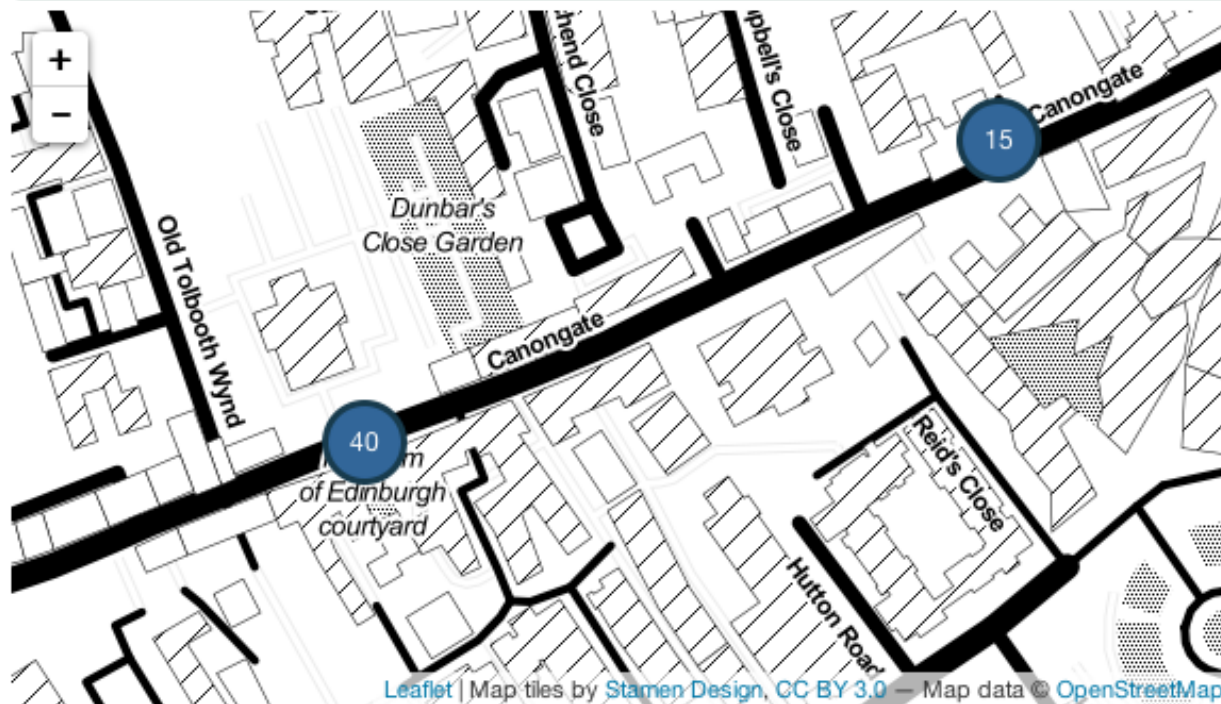
Canongate



author search [30 authors]

e.g. Walter Scott

Mentions of Real-World Locations within Books



Leaflet | Map tiles by Stamen Design, CC BY 3.0 — Map data © OpenStreetMap

List of Books [32]

id=uiuo.ark:/13960/t75t44r6g



Scott, Walter, 1840
The Prose Works of Sir Walter Scott.
(Supplementary volume: containing
notes, historical and illustrative, by the
author, glossary, etc.)

<https://historicaltexts.jisc.ac.uk/bl-003316901-07>



Scott, Walter, 1846
Waverley Novels. (Abbotsford edition.)

<https://historicaltexts.jisc.ac.uk/bl-003317065-04>



Knox, John, 1846
The works of John Knox;

<http://babel.hathitrust.org/cgi/pt?id=yale.39002007050355>



Deeper mapping: HyperCities, Berlin overlays

<http://hypercities.ats.ucla.edu>

The screenshot displays the HyperCities web application interface. The main view is a 3D satellite map of Berlin with a historical map overlay. The interface includes the following elements:

- Timeline:** A slider at the top left allows navigation between 2000 BCE and 3000, with a current selection at 1237.
- Navigation:** A compass and navigation controls are on the left side.
- World Map:** A small world map at the top right shows the location of Berlin with a red dot.
- Map Controls:** Checkboxes for "automatically refresh maps and collections", "3D buildings", "Roads", "Borders", "Terrain", and "historical image" are visible.
- Map Collections:** A list of historical maps is shown on the right, including:
 - 1650 Berlin 1650: Nach
 - 1650 Johann Gregor Memhard (Johann Gregor Memhard Map)
 - 1685 LaVigne Map Detail
- Map Data:** At the bottom, the current map data is displayed: Imagery Date: 10/25/2012, Coordinates: 52°31'23.50" N 13°22'15.27" E, Elevation: 32 m, Eye Altitude: 4.10 km.

Thicker mapping: Phil Ethington's GhostMetropolis



Featured Collection: Ghost Metropolis

by presner | July 30, 2009 | In Featured Collections

https://www.youtube.com/watch?v=iogP_YvKs1w

<http://hypercities.ats.ucla.edu/#collections/15165>

Recent Posts

[HyperCities book published with new website](#)

presner | June 5, 2014 | In Uncategorized

[ML \(Draft\)](#)

manok | August 1, 2013 | In How To

[UEH Summer Institute at UCLA: Digital Cultural Mapping \(June 18-July 6, 2012\)](#)

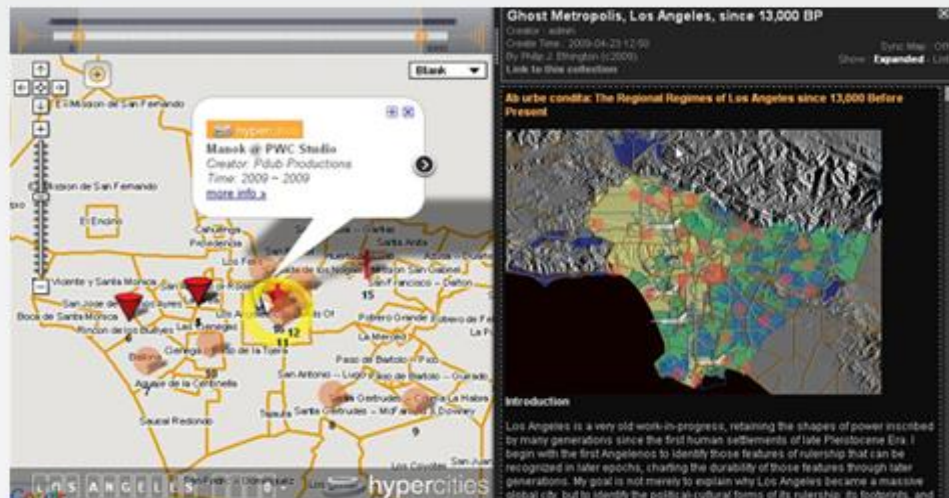
presner | December 16, 2011 | In Uncategorized

[HyperCities Los Angeles Launches](#)

presner | August 29, 2011 | In Uncategorized

[How to Navigate a HyperCities Collection](#)

David Shepard | July 14, 2011 | In How To



Split-screen view of Ghost Metropolis (right) with map of 1784-1846 Spanish-Mexican Rancho Land Grants (left) overlaid with a link to a community-created video of Historic Filipinotown (2009)

Composed by Philip Ethington (USC, History and Political Science), **Ghost Metropolis** is a global history of Los Angeles since earliest human habitation, written in narrative, non-academic prose, presented in print form as a hybrid of textual, cartographic, and photographic representation, in print, online (**HyperCities**), and public art formats. **Ghost Metropolis** is a 21st-century "Atlas," inspired by the Renaissance atlases of the 16th and 17th century, which are rich mixtures of typography, graphic arts, and of course cartography. How does a global metropolis come into being? How can we see such an impossibly large and complex urban center—especially one that is so fragmented, so massive, socially diverse, economically variegated, and politically complex?

Click on the YouTube video below to preview this collection:

Where are we going now...?

My Gossip Johnson
his foot voyage
and myne unto
Scotland.

Was set out of London on Monday the eight of July
and roode that night to Totnam where I was
lodged at Colles Boare st. By the way they
showed me to be a Shal-wally, or want, and his two
Sons & so.

From thence to Waltham, where my Lady's note came
to my Gossip and to Mr. Ed. Perry, Mr. Harbert
and Mr. Powell, so I was also came to see
Cambridge city. On the fourth of July called
Honey, and Blitheman, Mr. of Nale, who
showed to be a day, who had a luncheon
with us by the way, and roode darning before us
and a bumper of wine of whom we would not be
with us. There also to see ministers there
I saw a many of us asking whether we would
see a many of us. I was glad to be by a life and death
of my Lo: of the sea. This few words to me
and raised, so I stayed so from getting forward
till towards the evening. They were came to
see, to Mr. Gifford, John & Rob. Mansell



Deeper... thicker... moving...

- Adding depth ... geo-locating information about place, people, events
- Thickening description ... adding social interaction then and now, social spaces and communities, behaviour, experience, emotion, stories
- Adding motion ... the walk itself, route, speed, mapping bio-mechanics, physical effort, the moving landscape

Deeper...thicker... Historypin collaboratively building human history

historypin Pubs of London Sign in Join

<https://www.historypin.org/en/explore/a-history-of-pubs/geo/51.498485,-0.123596,9/bounds/51.037077,-0.593262,51.955269,0.34607>

Search SEARCH Reset Search

sorted by: ▼

Saved from closure in 2012, this late Victorian pub has retained its charming historical interior.

PUBS OF LONDON
Railway Tavern

The Railway Tavern Hotel has been in the same family for four decades.

1840 2015

1840 2015

Mapping movement, capturing experience

Field Trip app, Edina

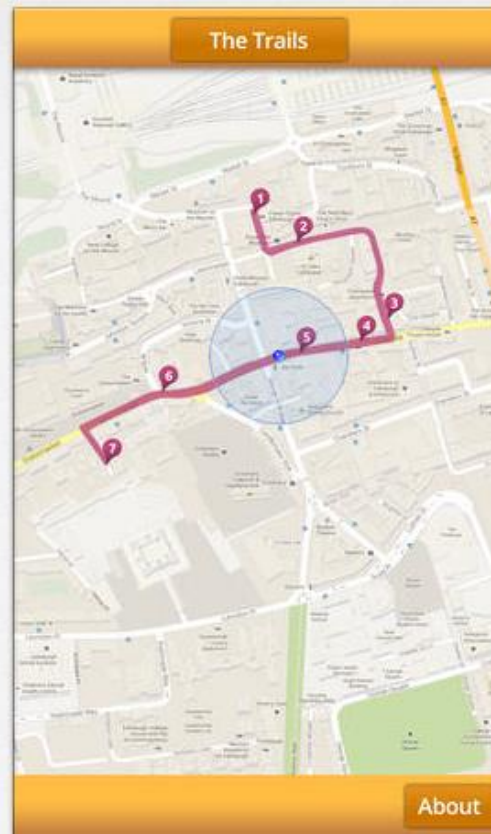
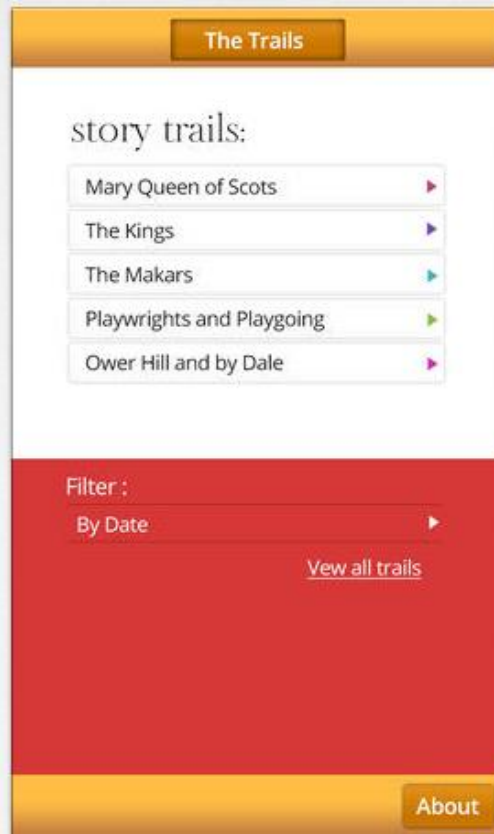
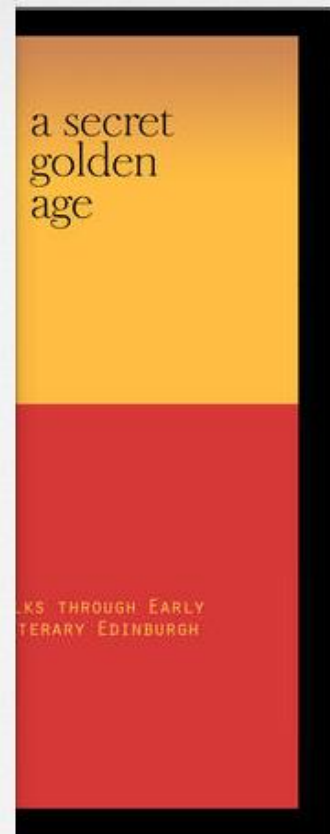
<http://fieldtrippgb.blogs.edina.ac.uk/>



Visualising movement: A Secret Golden Age: early literary walks through Edinburgh App

<http://www.asecretgoldenage.com>

iPhone Screenshots



Description

Edinburgh is the world's first ever UNESCO City of Literature. It is internationally famous for its rich literary history, as well as the large number of writers still living and working in the city today. This project traces some of the stories of Edinburgh's earliest literary past. Following these trails you can walk in the footsteps of long-dead writers uncover connections between the words produced in and about the city and the city itself, looking at Edinburgh's landscape

Suggestions please to...

- agroundw
- anna.groundwater@ed.ac.uk

Have a look at...

- <https://twitter.com/BenJonsonsWalk>
- <https://storify.com/jamesloxley/ben-jonson-s-walk>
- <http://www.blogs.hss.ed.ac.uk/ben-jonsons-walk/>